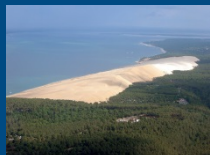




Progress with the new OIML website



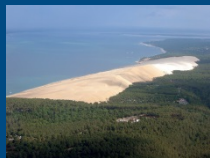


Summary of suggestions received in Romania

Structure and navigation

- Improve the site's navigation and modernize its design
- Use the Homepage for news and other public information
- Develop targeted information
- Group together all Member-related information
- Eliminate the need for double Member authentication
- Improve the search facilities

end

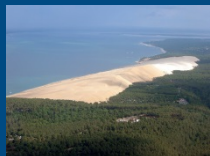




Summary of suggestions received in Romania

TCs/SCs

- Ensure technical information is always up to date
- Ensure status of projects is always up to date
- Ensure country participation is always up to date
- Ensure all information is cross-referenced
- Develop the Plone Workgroups functions
- Introduce more online voting possibilities
- Facilitate sending emails by conveners
- Make it easier for CIML Members to update these lists



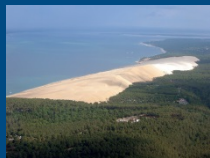


Summary of suggestions received in Romania

General

- Consider the best way to distribute information
- Increase visibility of developing country information

end

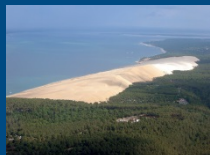




Features added since the last CIML Meeting

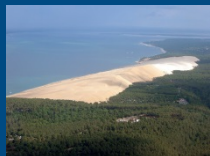
- CD comment / voting
- Written procedures
- PG Workspace
- CIML registration
- Review of publications

end



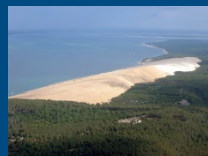


Basement Level Total IT Backup System



New 47U Rack

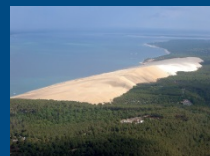
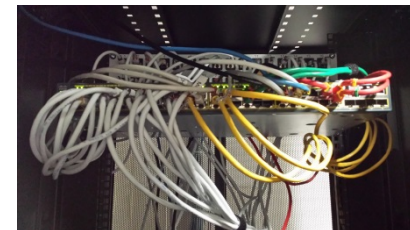
- The new Backup System is connected to the top floor level main IT rack via a 10 Gbps redundant dedicated local network fiber-optic link.
- A brand new 47U rack now houses backup and secondary equipment, as the main rack is now at capacity.





Components of the new basement rack

- Conference room switch
- NAS video system
- Front door video system
- 5000 VA UPS power backup providing 12 hours of uninterrupted 220 V AC power
- Dell DR4100¹ disk backup appliance (9-terabyte) using 13:1 compression technology
- Dell TL2000² tape technology automatic backup system
- Dell DL1000³ appliance application backup module dedicated to the MS-SQL servers
- KVM console to manage the whole backup system locally (the system can also be managed remotely)

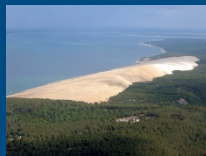




Tech stuff...



- ¹ The Dell DR4100 is used to backup all the data contained in the virtual machines and all the staff workstations over a 30-day period. This backup is easily exportable and can be set up externally (e.g. at the BIPM) if required. The fiber-optic link is connected directly into the DR4100.
- ² Linked into the DR4100, the Dell TL2000 can store data over an even longer period and the tapes can be stored in a safe if required.
- ³ Also linked into the DR4100, the Dell DL1000 is used to backup the large database applications on the MS-SQL servers (i.e. Sage accounting software database and main website database). If the MS-SQL server were to crash, this system can take over without any service interruption.





Additional work

- PC Workspace
- CPR Workspace
- Review and make improvements to entire site
- Collation of comments from a standard comments form

- *As needed*
- *CS Workspace*
- *B 6 Workspace*
- *RLMO Workspace*
- *CEEMS Workspace*
- *Reappointment of Conveners*

end

